



Reference Guide for Suspected, Presumptive, or Confirmed Cases of COVID-19 (K-12)

INTERIM GUIDANCE

PUBLISHED JUNE 30, 2020 • UPDATED DECEMBER 4, 2020



NC DEPARTMENT OF
**HEALTH AND
HUMAN SERVICES**

What's Inside

Introduction	1
Screening Flow Chart	2
Staff Roles Flow Chart	3
Daily Symptom Screening Checklist:	
• For any individual who cannot accurately respond for themselves	4
• For any individual who can accurately respond for themselves	6
Return from Exclusion Summary Tool	8
Positive Screening Protocol Checklists	10

Upon Arrival at School or Transportation Entry	EXPOSURE, NO SYMPTOMS	DIAGNOSIS, NO SYMPTOMS	SYMPTOMS
	Staff or Student shares they were exposed to someone with COVID-19 within the last 2 weeks but is NOT symptomatic	Staff or Student shares they were diagnosed with COVID-19 less than 10 days ago, but is NOT symptomatic	Staff or Student presents with at least one of the following COVID-19 symptoms (<i>Fever • Chills • Shortness of breath or difficulty breathing • New cough • New loss of taste or smell</i>)
WHO			
Staff Member OR Student: A designated individual (e.g., parent or guardian) is PRESENT to immediately support student to get home or to medical care safely	Pages 10-11	Pages 12-13	Pages 14-16
Student: A designated individual (e.g., parent or guardian) is NOT PRESENT to immediately support student to get home or to medical care safely	Pages 17-18	Pages 19-20	Pages 21-23

During the School Day	EXPOSURE, NO SYMPTOMS	DIAGNOSIS, NO SYMPTOMS	SYMPTOMS
	Staff or Student shares they were exposed to someone with COVID-19 within the last 2 weeks but is NOT symptomatic	Staff or Student shares they were diagnosed with COVID-19 less than 10 days ago, but is NOT symptomatic	Staff or Student presents with at least one of the following COVID-19 symptoms (<i>Fever • Chills • Shortness of breath or difficulty breathing • New cough • New loss of taste or smell</i>)
WHO			
Student	Pages 24-25	Pages 26-27	Pages 28-30
Staff Member	Pages 31	Pages 32-33	Pages 34-36



Introduction

This Screening Reference Guide is intended as a helpful tool for local education leaders across the state that should be used in response to suspected, presumed, or confirmed cases of COVID-19 on a school campus.

Note: This document does not outline all detailed public health guidance for K-12 schools.

- For all public health guidance view the [StrongSchoolsNC Public Health Toolkit \(K-12\)](#).
- For more information on PPE and Infection Control Items, view the [StrongSchoolsNC Infection Control and PPE Guidance \(K-12\)](#).
- For more information on [K-12 COVID-19 testing considerations](#), click here.
- Click for more information on quarantining in [English](#) and in [Spanish](#).

This Screening Reference Guide outlines protocols for staff to follow when responding to a positive symptom screening. These protocols identify next steps in interacting with students or staff who have screened positive, meaning they:

1. Share they were exposed to someone with COVID-19 (defined as having close contact of less than 6 feet distance for more than 15 minutes cumulative over a 24-hour period) but have no symptoms;
2. Share they were diagnosed with COVID-19 less than 10 days ago but are not currently symptomatic; OR
3. Present with at least one of the following COVID-19 symptoms:
 - Fever
 - Chills
 - Shortness of breath or difficulty breathing
 - New cough
 - New loss of taste or smell

The following staff should adhere to protocols outlined in this Screening Reference Guide:

- All school staff who interact with students, to know what to do if students share they had an exposure to or diagnosis of COVID-19, or develop COVID-19 symptoms during the day.
- School staff who are conducting daily symptom screening upon arrival at school or at transportation entry.
- School nurses or delegated staff who are responsible for cleaning, notification to local health departments, and/or communication to students, families, teachers, and staff, according to the protocols outlined in this guide.

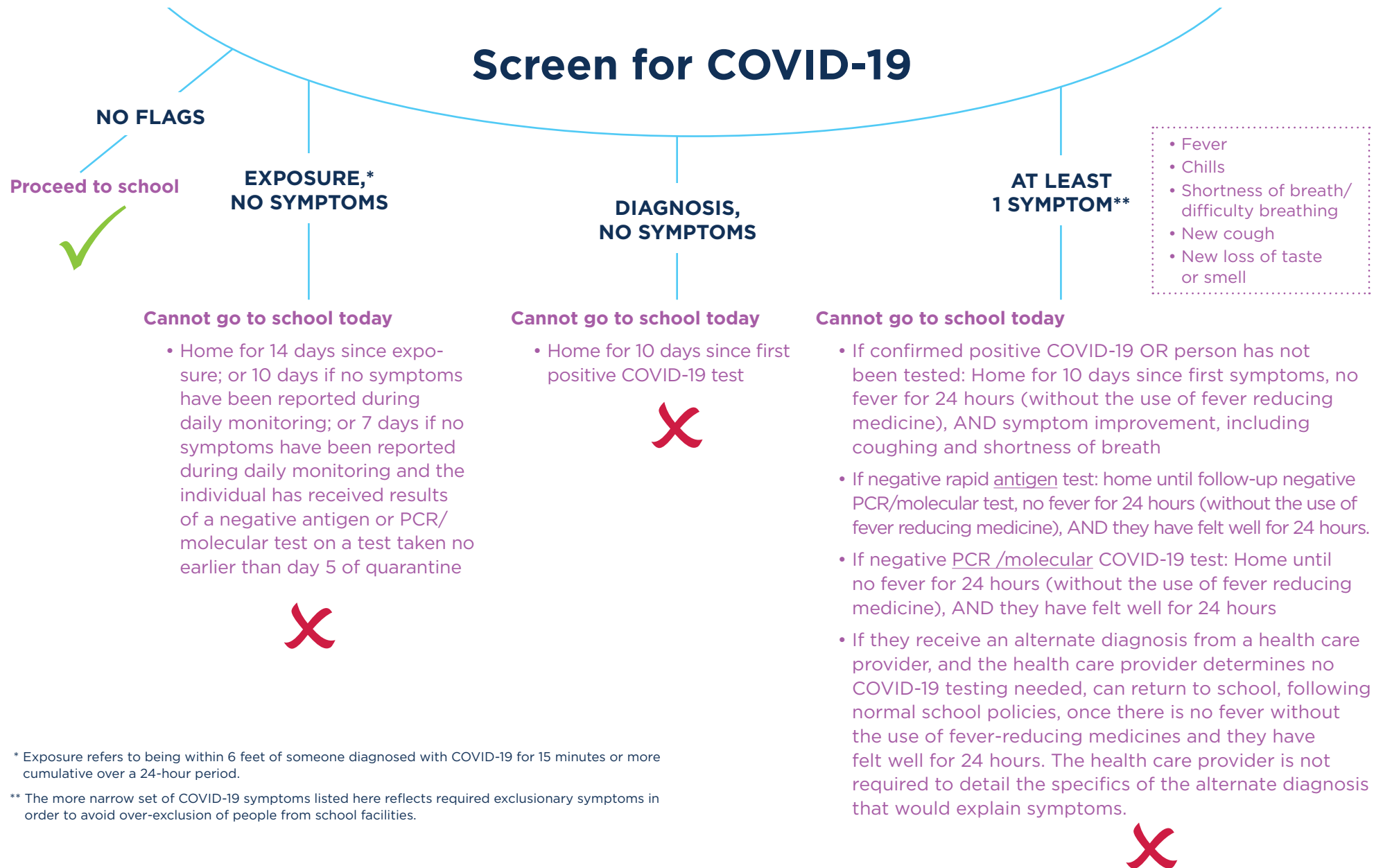
CDC continues to recommend quarantine for 14 days after last exposure. However, as of December 2, 2020, the [CDC has offered options](#) to reduce the duration of quarantine to

- **10 days if no symptoms have been reported during daily monitoring, or**
- **7 days if no symptoms have been reported during daily monitoring, and the individual has received results of a negative antigen or PCR/molecular test on a test taken no earlier than day 5 of quarantine. This document has been updated to reflect these considerations.**

Have questions about this guidance? Visit the [Frequently Asked Questions](#) page.



Screening Flow Chart

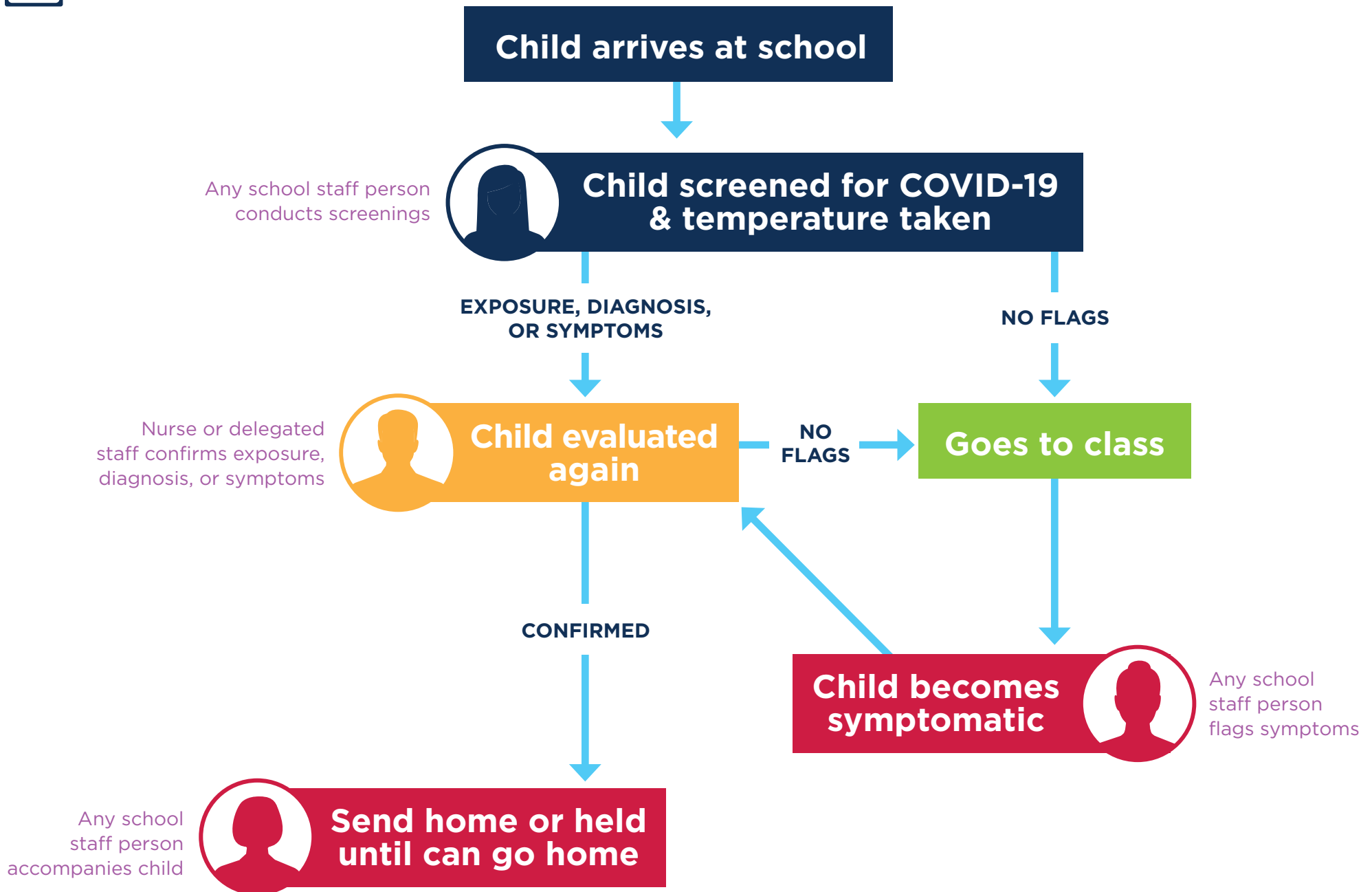


* Exposure refers to being within 6 feet of someone diagnosed with COVID-19 for 15 minutes or more cumulative over a 24-hour period.

** The more narrow set of COVID-19 symptoms listed here reflects required exclusionary symptoms in order to avoid over-exclusion of people from school facilities.



Staff Roles Flow Chart



DAILY SYMPTOM SCREENING CHECKLIST

For any individual who cannot accurately respond for themselves

(Suggested for elementary school students)

Upon entry to school, the screener must direct the questions below to the accompanying individual who can respond accurately on behalf of the person. If the answer is “yes” to any of the questions below, that individual must be excluded from school.

For more detailed steps on how to respond to a “yes” on any of the questions below, screeners and school leaders should refer to the [Reference Guide for Suspected, Presumptive, or Confirmed Cases of COVID-19](#).

1. Ask: Has the individual you are dropping off been diagnosed with COVID-19 since they were last at school?

- ☐ Yes
- ☐ No

• If No, move on to Question 2.

• If Yes, say and ask: They cannot go to school. Does anyone else who lives with them also go to or work at this school? ☐ Yes ☐ No

– If Yes, say: Those individuals cannot go to school.

2. Ask: Has the individual you are dropping off had any of the following symptoms since they were last at school?

- ☐ Fever
- ☐ Chills
- ☐ Shortness of breath or difficulty breathing
- ☐ New cough
- ☐ New loss of taste or smell

• If No, move on to Question 3.

• If Yes to at least one symptom on this list, say and ask: They cannot go to school. Does anyone else who lives with them also go to or work at this school? ☐ Yes ☐ No

– If Yes, say: Those individuals cannot go to school.

3. Ask: Has the individual you are dropping off had close contact (been within 6 feet of someone diagnosed with COVID-19 for a cumulative total of 15 minutes over a 24-hour period) in the last 14 days?

- ☐ Yes
- ☐ No

• If No, move on to Question 4.

• If Yes, say: They cannot go to school.

4. Ask: Has any health department staff or a health care provider been in contact with the person you are dropping off and advised them to quarantine?

- ☐ Yes
- ☐ No

• If No, say: The person may go to school.

• If Yes, say: They cannot go to school.

LISTA DE VERIFICACIÓN DIARIA PARA EVALUACIÓN DE SÍNTOMAS

Para cualquier persona que no pueda responder con precisión por sí mismo

(Sugerido para alumnos de escuela primaria)

Al ingresar a la escuela, debe preguntar a la persona acompañante que pueda responder con precisión en nombre de la persona. Si la respuesta es “sí” a cualquiera de las preguntas siguientes, esa persona debe ser excluida de la escuela.

Para ver pasos más detalles sobre cómo responder a un “sí” en cualquiera de las preguntas siguientes, los examinadores y los líderes escolares deben consultar la [Guía de Referencia para Casos Sospechosos, Presuntivos o Confirmados de COVID-19 \(inglés\)](#).

1. Pregunte: ¿La persona a la que está dejando ha sido diagnosticada COVID-19 desde la última vez que fue en la escuela?

- ☐ Sí
- ☐ No

• Si no, pase a la pregunta 2.

• En caso afirmativo, diga y pregunte: No pueden ir a la escuela. ¿Alguien más que vive con ellos también va o trabaja en esta escuela? ☐ Sí ☐ No

– En caso afirmativo, diga: Esas personas no pueden ir a la escuela.

2. Pregunte: ¿La persona a la que está dejando ha tenido alguno de los siguientes síntomas desde la última vez que fueron en la escuela?

- ☐ Fiebre
- ☐ Escalofríos
- ☐ Falta de aliento o dificultad para respirar
- ☐ Nueva Tos
- ☐ Nueva pérdida del sentido del olfato o del gusto

• Si no, pase a la pregunta 3.

• En caso afirmativo a al menos un síntoma en esta lista, diga y pregunte: No pueden ir a la escuela. ¿Alguien más que vive con ellos también va o trabaja en esta escuela? ☐ Sí ☐ No

– En caso afirmativo, diga: Esas personas no pueden ir a la escuela.

3. Pregunte: ¿La persona a la que está dejando tuvo contacto cercano (a menos de 6 pies de alguien diagnosticado con el COVID-19, durante un total acumulado de 15 minutos durante un período de 24 horas) en los últimos 14 días?

- ☐ Sí
- ☐ No

• Si no, pase a la pregunta 4.

• En caso afirmativo, diga: No pueden ir a la escuela.

4. Pregunte: ¿Algún personal del departamento de salud o un proveedor de atención médica ha estado en contacto con la persona a la que está dejando y le ha aconsejado que se ponga a su niño en cuarentena?

- ☐ Sí
- ☐ No

• Si No, la persona puede ir a la escuela.

• En caso afirmativo, diga: No pueden ir a la escuela.

DAILY SYMPTOM SCREENING CHECKLIST

For any individual who can accurately respond for themselves

(Suggested for middle or high school students, and adults)

Upon entry to school, the screener must ask the questions below directly to the individual. If an individual answers “yes” to any of the questions below, that individual must be excluded from school.

For more detailed steps on how to respond to a “yes” on any of the questions below, screeners and school leaders should refer to the [Reference Guide for Suspected, Presumptive, or Confirmed Cases of COVID-19](#).

1. Ask: Have you been diagnosed with COVID-19 since you were last at school?

- ☐ Yes
- ☐ No

• If No, move on to Question 2.

• If Yes, say and ask: You cannot go to school. Does anyone else who lives with you also go to or work at this school? ☐ Yes ☐ No

– If Yes, say: Those individuals cannot go to school.

2. Ask: Have you had any of the following symptoms since you were last at school?

- ☐ Fever
- ☐ Chills
- ☐ Shortness of breath or difficulty breathing
- ☐ New cough
- ☐ New loss of taste or smell

• If No, move on to Question 3.

• If Yes to at least one symptom on this list, say and ask: You cannot go to school. Does anyone else who lives with you also go to or work at this school? ☐ Yes ☐ No

– If Yes, say: Those individuals cannot go to school.

3. Ask: Have you had close contact (been within 6 feet of someone diagnosed with COVID-19 for a cumulative total of 15 minutes over a 24-hour period) in the last 14 days?

- ☐ Yes
- ☐ No

• If No, move on to Question 4.

• If Yes, say: You cannot go to school.

4. Ask: Has any health department staff or a health care provider been in contact with you and advised you to quarantine?

- ☐ Yes
- ☐ No

• If No, say: You may go to school.

• If Yes, say: You cannot go to school.

LISTA DE VERIFICACIÓN DIARIA PARA EVALUACIÓN DE SÍNTOMAS

Para cualquier persona que pueda responder con precisión por sí mismo

(Sugerido para alumnos de secundaria o preparatoria, y adultos)

Al ingresar a la escuela, el evaluador debe hacer las siguientes preguntas directamente a la persona. Si la respuesta es “sí” por cualquiera de las preguntas siguientes, esa persona debe ser excluida de la escuela.

Para ver pasos más detalles sobre cómo responder a un “sí” en cualquiera de las preguntas siguientes, los examinadores y los líderes escolares deben consultar la [Guía de Referencia para Casos Sospechosos, Presuntivos o Confirmados de COVID-19 \(inglés\)](#).

1. Pregunte: ¿Le han diagnosticado COVID-19 desde la última vez que fue en la escuela?

- ☐ Sí
- ☐ No

• Si no, pase a la pregunta 2.

• En caso afirmativo, diga y pregunte: No puede ir a la escuela. ¿Alguien más que vive contigo también va o trabaja en esta escuela? ☐ Sí ☐ No

– En caso afirmativo, diga: Esas personas No ir a la escuela.

2. Pregunte: ¿Ha tenido alguno de los siguientes síntomas desde la última vez que fue en la escuela?

- ☐ Fiebre
- ☐ Escalofríos
- ☐ Falta de aliento o dificultad para respirar
- ☐ Nueva Tos
- ☐ Nueva pérdida del sentido del olfato o del gusto

• Si no, pase a la pregunta 3.

• En caso afirmativo a al menos un síntoma en esta lista, diga y pregunte: No puede ir a la escuela. ¿Alguien más que vive contigo también va o trabaja en esta escuela? ☐ Sí ☐ No

– En caso afirmativo, diga: Esas personas no pueden ir a la escuela.

3. Pregunte: ¿Ha tenido contacto cercano (a menos de 6 pies de alguien diagnosticado con el COVID-19 durante un total acumulado de 15 minutos durante un período de 24 horas) en los últimos 14 días?

- ☐ Sí
- ☐ No

• Si no, pase a la pregunta 4.

• En caso afirmativo, diga: No puede ir a la escuela.

4. Pregunte: ¿Algún personal del departamento de salud o un proveedor de atención médica ha estado en contacto con usted y le aconsejó que se ponga en cuarentena?

- ☐ Sí
- ☐ No

• Si No, diga: Puede ir a la escuela.

• En caso afirmativo, diga: No puede ir a la escuela.

Returning from Exclusion: Summary Tool

This summary tool is for school leaders to support individuals returning from exclusion. School leaders should collaborate and communicate with the excluded individuals, their families, local health departments, and health care providers, in determining when an excluded individual can return to school. Note: A negative COVID-19 test is **not** required for an individual to return from exclusion.

For more details on isolation and quarantine given different scenarios (such as living with someone who is positive for COVID-19), school leaders should refer to [When to Quarantine](#) (also available in Spanish).

For more details on COVID-19 testing in K-12 environments, refer to [K-12 COVID-19 Testing Considerations](#) (also available in Spanish).

Exclusion Category	Scenario	Criteria to return to school
Diagnosis	Person has tested positive with an antigen test but does not have symptoms of COVID-19	If the person takes a repeat PCR/molecular test performed in a laboratory within 24 – 48 hours of their positive antigen test, and that PCR/molecular test is negative: the positive antigen test can be considered a false positive and the person can immediately return to school; OR If the person does not take a repeat PCR/molecular test, or takes one within 24 – 48 hours and it is also positive: The person can return to school when they complete 10 days of isolation. Isolation should begin starting from the date of their first positive test.
Diagnosis	Person has tested positive with a PCR/molecular test but the person does not have symptoms.	Person can return to school when they complete 10 days of isolation. Isolation should begin starting from the date of their first positive test.
Symptoms	Person has symptoms of COVID-19 and has tested positive with an antigen test or PCR/molecular test	Person can return to school when <ul style="list-style-type: none"> • The person completes 10 days of isolation. Isolation should begin starting from their first day of symptoms; AND • It has been at least 24 hours since the person had a fever (without using fever reducing medicine); AND • Other symptoms of COVID-19 are improving.
Symptoms	Person has symptoms of COVID-19 but has not been tested for COVID-19 nor has visited a health care provider. Therefore, the person who has symptoms is presumed positive.	Person can return to school when <ul style="list-style-type: none"> • The person completes 10 days of isolation. Isolation should begin starting from the first day of symptoms; AND • It has been at least 24 hours since the person had a fever (without using fever reducing medicine); AND • Other symptoms of COVID-19 are improving.
Symptoms	Person has symptoms of COVID-19 but has visited a health care provider and received an alternate diagnosis that would explain the symptoms of fever, chills, shortness of breath or difficulty breathing, new cough or new loss of taste or smell, and the health care provider has determined COVID-19 testing is not needed.	Person can return to school when <ul style="list-style-type: none"> • It has been at least 24 hours since the person had a fever (without using fever reducing medicine); AND • They have felt well for at least 24 hours. <p>Note: The health care provider is not required to detail the specifics of the alternate diagnosis.</p>

Exposure	Person has been in close contact with someone with a confirmed case of COVID-19 .	<p>Person can return to school after completing up to 14 days of quarantine. The 14 days of quarantine begin after the last known close contact with the COVID-19 positive individual. Alternatively, the person may complete a 10-day quarantine if the person is not presenting symptoms of COVID-19 (e.g. loss of taste and/or smell) after daily monitoring, or they may complete 7 days of quarantine if they report no symptoms during daily monitoring, and the individual has received results of a negative antigen or PCR/molecular test on a test taken no earlier than day 5 of quarantine.</p> <p>If quarantine is discontinued before day 14, the individual must continue to monitor symptoms and strictly adhere to all non-pharmaceutical interventions (e.g. wear a mask, practice social distancing) through 14 days after the date of last exposure.</p>
Household Member, Exposure	Person is a household member (e.g. a sibling) of someone with a confirmed case of COVID-19 .	<p>Person can return to school after completing 14 days of quarantine, 10 days of quarantine if no symptoms are present in daily symptom reporting, or 7 days of quarantine if no symptoms are present in daily symptom reporting and PCR and/or molecular tests are negative no earlier than day 5 of quarantine. Quarantine begins at the end of a 10-day isolation of the person with COVID-19.</p> <p>If quarantine is discontinued before day 14, the individual must continue to monitor symptoms and strictly adhere to all non-pharmaceutical interventions (e.g. wear a mask, practice social distancing) through 14 days after the date of last exposure.</p>
Household Member, Symptoms	Person is a household member (e.g. a sibling) of someone who has symptoms of COVID-19 but who has not been tested for COVID-19, nor has visited a health care provider. Therefore, the person who has symptoms is presumed positive.	<p>Person can return to school after completing 14 days of quarantine, 10 days of quarantine if no symptoms are present in daily symptom reporting, or 7 days of quarantine if no symptoms are present in daily symptom reporting and PCR and/or molecular tests are negative no earlier than day 5 of quarantine. Since the presumption of COVID-19 is not ruled out through an alternative diagnosis, quarantine begins at the end of a 10-day isolation of the person with COVID-19 since that person may remain infectious for up to 10 days after symptom onset.</p> <p>If quarantine is discontinued before day 14, the individual must continue to monitor symptoms and strictly adhere to all non-pharmaceutical interventions (e.g. wear a mask, practice social distancing) through 14 days after the date of last exposure.</p>
Household Member, Symptoms	Person is a household member (e.g. a sibling) of someone who has symptoms of COVID-19 but has visited a health care provider and received an alternate diagnosis that would explain the symptoms of fever, chills, shortness of breath or difficulty breathing, new cough or new loss of taste or smell, and the health care provider has determined COVID-19 testing is not needed.	<p>Person can return to school when household member receives their alternate diagnosis.</p> <p>Note: The health care provider is not required to detail the specifics of the alternate diagnosis.</p>



Positive Screening Protocols

Upon Arrival at School or Transportation Entry

WHO	Staff Member OR Student: A designated individual (e.g., parent or guardian) is PRESENT to immediately support student to get home or to medical care safely
CATEGORY	EXPOSURE, NO SYMPTOMS: Staff or Student shares they were exposed to someone with COVID-19 within the last 2 weeks but is NOT symptomatic

Exclusion

- ☐ Do not allow person to enter school facility.
- ☐ If staff, supervisor must be notified immediately.
- ☐ Person must immediately go home.
- ☐ Person may not return to school until:
 - If no symptoms develop and they do not have a positive COVID-19 test, up to 14 days after last close contact with the positive individual.
 - If no symptoms develop but the person tests positive for COVID-19, 10 days after the date of the first positive test.
 - If symptoms develop and the person tests negative for COVID-19, up to 14 days after the last close contact with the positive individual.
 - If symptoms develop and the person tests positive for COVID-19, 10 days after the first positive test.
- ☐ Person may participate in remote learning or teaching (if applicable) while out.

Infection Control

- ☐ Ensure that face coverings are worn by all workers, teachers, guests, other adults and children age five (5) or older. In all public and nonpublic schools, all workers, teachers, guests, other adults and children five (5) years or older must wear face coverings when indoors, at all times, unless an exception applies, and when outdoors and within six (6) feet of another person, unless an exception applies.
- ☐ Individuals waiting to be screened must stand six feet apart from each other.
- ☐ The person taking temperatures must wear a cloth face covering and must stay six feet from the individual unless taking a temperature.

Transportation

- ☐ Person may not utilize group transportation such as the bus in order to leave the school facility

Reporting

- ☐ School is not required to report a positive screening for exposure to the Local Health Department.

Communication Between School and Local Health Department

- ☐ School may consult with the Local Health Department on next steps for management and considerations on cleaning following a positive screening for exposure.

Closure

- ☐ No closure is required.
- ☐ However, the school may consult with the Local Health Department on next steps.

Cleaning

- ☐ No additional cleaning is required beyond Plan A operational requirements.
- ☐ However, the school may consult with the Local Health Department on next steps.

Communication with Students, Families, and Staff

- ☐ School is not required to share the positive screening for exposure with students, families, and staff.
- ☐ However, the school may consult with the Local Health Department on next steps regarding considerations about communication following this particular instance of a positive screening for exposure.

Local Health Department Next Steps

- ☐ The Local Health Department may provide support to the school on next steps, if requested, for items such as management, considerations on cleaning, and communication following a positive screening for exposure.



Positive Screening Protocols

Upon Arrival at School or Transportation Entry

WHO	Staff Member OR Student: A designated individual (e.g., parent or guardian) is PRESENT to immediately support student to get home or to medical care safely
CATEGORY	DIAGNOSIS, NO SYMPTOMS: Staff or Student shares they were diagnosed with COVID-19 less than 10 days ago, but is NOT symptomatic

Exclusion

- ☐ Do not allow person to enter school facility.
- ☐ If staff, supervisor must be notified immediately.
- ☐ Person must immediately go home.
- ☐ If they never develop symptoms before or after their positive test: person can return to school 10 days after the date of their first positive COVID-19 diagnostic test.
- ☐ Person may participate in remote learning or teaching (if applicable) while out.

Infection Control

- ☐ Ensure that face coverings are worn by all workers, teachers, guests, other adults and children age five (5) or older. In all public and nonpublic schools, all workers, teachers, guests, other adults and children five (5) years or older must wear face coverings when indoors, at all times, unless an exception applies, and when outdoors and within six (6) feet of another person, unless an exception applies.
- ☐ Individuals waiting to be screened must stand six feet apart from each other.
- ☐ The staff person taking temperatures must wear a cloth face covering, and must stay six feet from the individual unless taking a temperature.

Transportation

- ☐ Person may not utilize group transportation such as the bus in order to leave the school facility.

Reporting

- ☐ School must report a diagnosed case of COVID-19 among students or staff to the Local Health Department, as required by [NCGS § 130A-136](#).
- ☐ School must provide requested information, such as answering questions about adherence to mitigation efforts (e.g., wearing cloth face coverings with fidelity) and identifying potential close contacts based on classroom attendance.

Communication Between School and Local Health Department

- ☐ School must follow the directions from the Local Health Department for this particular instance, such as room or building closure, contacting students, staff, and families, and/or specific cleaning protocols.

Closure

- ☐ Close off areas used by the sick person and do not use these areas until after cleaning and disinfecting.
- ☐ Consult with the Local Health Department as to whether closure of a room or entire building is required. There may be no need to close the school if the Local Health Department determines that close contacts are excluded and there is sufficient space to continue normal operations.

Cleaning

- ☐ Close off areas used by the sick person, including school transportation vehicles, and do not use these areas until after cleaning and disinfecting.
- ☐ Wait at least 24 hours before cleaning and disinfecting. If 24 hours is not feasible, wait as long as possible.
- ☐ People should not be in the classroom, room, or other area of the facility while it is being cleaned.
- ☐ Open outside doors and windows to increase air circulation in the area.
- ☐ Use an [EPA-registered disinfectant](#) that is active against coronaviruses. Clean and disinfect frequently touched surfaces.
- ☐ Remember to clean items that might not ordinarily be cleaned daily such as doorknobs, light switches, countertops, chairs, cubbies, and playground structures.
- ☐ Follow [NCDHHS Environmental Health Section guidance](#) for additional cleaning and disinfection recommendations.
- ☐ For school transportation vehicles:
 - Do not use the vehicle until after cleaning and disinfection.
 - Wait at least 24 hours before cleaning and disinfecting (or if 24 hours is not feasible, wait as long as possible). Open vehicle windows to ventilate if possible.
 - Follow cleaning guidance in the Transportation section of the [StrongSchoolsNC Public Health Toolkit \(K-12\)](#).
- ☐ School must follow any other cleaning directions from the Local Health Department for this particular instance.

Communication with Students, Families, and Staff

- ☐ School may choose to notify staff and families that there was an individual at the school who was diagnosed with COVID-19.
- ☐ Any notice to staff and families must maintain confidentiality in accordance with [NCGS § 130A-143](#), FERPA, and all other state and federal laws.
- ☐ Local Health Department will contact staff and families if they are identified as a close contact of the individual who tested positive.

Local Health Department Next Steps

- ☐ The Local Health Department staff will interview the person with COVID-19. The parents or guardians of minor children may be included in the interview. As part of the interview, public health staff will work with the person/family, and the school, if appropriate, to identify individuals who were in close contact (defined as within 6 feet for 15 minutes or longer).
- ☐ Public health staff will reach out to close contacts and inform them that they need to quarantine at home for up to 14 days after their last contact with the person with COVID-19. If close contacts cannot socially distance from a case in the home, close contacts will need to quarantine for up to 14 days after the person who tested positive for COVID-19 is released from isolation. Click for more information on quarantining in [English](#) and in [Spanish](#).
- ☐ Public health staff will share that if a close contact's quarantine is discontinued before day 14 (i.e., discontinued at day 10 due to absence of symptoms, or discontinued at day 7 due to absence of symptoms and a negative PCR or molecular test), the individual must continue to adhere to all non-pharmaceutical interventions (e.g. wear a mask, practice social distancing) through 14 days after the last date of exposure.
- ☐ Public health staff will recommend the close contacts be tested to identify additional positive cases.
- ☐ Public health staff will share that a close contact who tests negative no earlier than day 5 of quarantine and is not presenting symptoms of COVID-19 may discontinue quarantine at day 7. However, the individual must continue to adhere to all non-pharmaceutical interventions (e.g. wear a mask, practice social distancing) through 14 days after the last date of exposure.



Positive Screening Protocols

Upon Arrival at School or Transportation Entry

WHO	Staff Member OR Student: Student: A designated individual (e.g., parent or guardian) is PRESENT to immediately support student to get home or to medical care safely
CATEGORY	SYMPTOMS: Staff or Student presents with at least one of the following COVID-19 symptoms (<i>Fever • Chills • Shortness of breath or difficulty breathing • New cough • New loss of taste or smell</i>)

Exclusion

- ☐ Do not allow person to enter school facility
- ☐ If staff, supervisor must be notified immediately
- ☐ Person must immediately go home and seek medical care
- ☐ If diagnosed by a medical professional with COVID-19 based on a test (PCR/molecular or antigen) or symptoms, or does not get a COVID-19 test but has had symptoms, the person may return to school 10 days after their first day of symptoms and at least 24 hours with no fever without the use of fever-reducing medications, and other COVID-19 symptoms are improving.
- ☐ If the person receives a negative PCR/molecular COVID-19 test, person may return to school once there is no fever for 24 hours without the use of fever-reducing medicines and symptoms are improving.
- ☐ If the person receives a negative rapid antigen test, they may not return to school until they have a follow up PCR/molecular test. If the follow-up PCR/molecular test is negative, person may return to school once there is no fever for 24 hours without the use of fever-reducing medicines and symptoms are improving.
 - Any excluded household members may return to school when the symptomatic individual receives a negative PCR/molecular test, assuming no symptoms have developed.
- ☐ Person may participate in remote learning or teaching (if applicable) while out.
- ☐ The person can return to school, following normal school policies, if they receive confirmation of an alternate diagnosis from a health care provider that would explain the COVID-19-like symptom(s), once there is no fever for 24 hours without the use of fever-reducing medicines and symptoms are improving.
- ☐ All members of the symptomatic individual's household affiliated with the school (such as a sibling who is also a student, or a parent who is a teacher) must also follow procedures outlined above, because they are contacts to a potential COVID-19 case, based on the presence of symptoms consistent with COVID-19.
 - If the symptomatic individual receives confirmation of an alternate diagnosis from a health care provider that would explain the COVID-19-like symptom(s), household members may return to school at that time. The symptomatic individual may return once there is no fever without the use of fever-reducing medicines and they have felt well for 24 hours.

Infection Control

- ☐ Ensure that face coverings are worn by all workers, teachers, guests, other adults and children age five (5) or older. In all public and nonpublic schools, all workers, teachers, guests, other adults and children five (5) years or older must wear face coverings when indoors, at all times, unless an exception applies, and when outdoors and within six (6) feet of another person, unless an exception applies.
- ☐ Individuals waiting to be screened must stand six feet apart from each other.
- ☐ The staff person taking temperatures must wear a cloth face covering and must stay six feet from the individual unless taking a temperature.

Transportation

- ☐ The person may not utilize group transportation such as the bus in order to leave the school facility.

Reporting

- ☐ School must report a suspected or confirmed COVID-19 case among students or staff to the Local Health Department, as required by [NCGS § 130A-136](#).
- ☐ School must provide requested information, such as answering questions about adherence to mitigation efforts (e.g., wearing cloth face coverings with fidelity) and identifying potential close contacts based on classroom attendance.

Communication Between School and Local Health Department

- ☐ If suspected or confirmed positive case is reported:
 - School must follow the directions shared by the Local Health Department for this particular instance, such as contacting students, staff, and families, and/or specific cleaning protocols, and possible room or building closure.

Closure

- ☐ Close off areas used by the sick person and do not use these areas until after cleaning and disinfecting.
- ☐ Consult with the Local Health Department as to whether closure of a classroom or entire building is required. There may be no need to close the school if the Local Health Department determines that close contacts are excluded and there is sufficient space to continue normal operations.

Cleaning

- ☐ Close off areas used by the sick person, including school transportation vehicles, and do not use these areas until after cleaning and disinfecting.
- ☐ Wait at least 24 hours before cleaning and disinfecting. If 24 hours is not feasible, wait as long as possible.
- ☐ People should not be in the classroom, room, or other area of the facility while it is being cleaned.
- ☐ Open outside doors and windows to increase air circulation in the area.
- ☐ Use an [EPA-registered disinfectant](#) that is active against coronaviruses. Clean and disinfect frequently touched surfaces.
- ☐ Remember to clean items that might not ordinarily be cleaned daily such as doorknobs, light switches, countertops, chairs, cubbies, and playground structures.
- ☐ Follow [NCDHHS Environmental Health Section guidance](#) for additional cleaning and disinfection recommendations.
- ☐ For school transportation vehicles:
 - Do not use the vehicle until after cleaning and disinfection.
 - Wait at least 24 hours before cleaning and disinfecting (or if 24 hours is not feasible, wait as long as possible).
 - Follow cleaning guidance in the Transportation section of the [StrongSchoolsNC Public Health Toolkit \(K-12\)](#).
- ☐ School must follow any other directions shared by the Local Health Department for this particular instance.

Communication with Students, Families, and Staff

- ☐ If a suspected or confirmed case is reported:
 - School may choose to notify staff and families that there was an individual at the school with a suspected or confirmed case for COVID-19.
 - Any notice to staff and families must maintain confidentiality in accordance with [NCGS § 130A-143](#) and all other state and federal laws.
 - Local Health Department will contact staff and families if they are identified as a close contact of the suspected or confirmed case.
- ☐ If there is no suspected or confirmed case of COVID-19:
 - School is not required to share the positive screening for symptoms with students, families, and staff.
 - However, the school may consult with the Local Health Department on next steps regarding the need for communication following this particular instance of a positive screening for symptoms.
 - Any notice to staff and families must maintain confidentiality in accordance with [NCGS § 130A-143](#) and all other state and federal laws.

Local Health Department Next Steps

- If a suspected or confirmed case reported:
 - The Local Health Department staff will interview the person with COVID-19. The parents or guardians of minor children may be included in the interview. As part of the interview, public health staff will work with the person/family, and the school, if appropriate, to identify individuals who were in close contact (defined as within 6 feet for 15 minutes or longer).
 - Public health staff will reach out to close contacts and inform them that they need to quarantine at home for up to 14 days after their last contact with the person with COVID-19. If close contacts cannot socially distance from a case in the home, close contacts will need to quarantine for up to 14 days after the person who tested positive for COVID-19 is released from isolation. Click for more information on quarantining in [English](#) and in [Spanish](#).
 - Public health staff will share that if a close contact's quarantine is discontinued before day 14 (i.e., discontinued at day 10 due to absence of symptoms, or discontinued at day 7 due to absence of symptoms and a negative PCR or molecular test), the individual must continue to adhere to all non-pharmaceutical interventions (e.g. wear a mask, practice social distancing) through 14 days after the last date of exposure.
 - Public health staff will recommend the close contacts be tested to identify additional positive cases.
 - Public health staff will share that a close contact who tests negative no earlier than day 5 of quarantine and is not presenting symptoms of COVID-19 may discontinue quarantine at day 7. However, the individual must continue to adhere to all non-pharmaceutical interventions (e.g. wear a mask, practice social distancing) through 14 days after the last date of exposure.
- If there is no suspected or confirmed case of COVID-19:
 - School is not required to share the positive screening for symptoms with students, families, and staff.
 - However, the school may consult with the Local Health Department on next steps regarding the need for communication following this particular instance of a positive screening for symptoms.
 - Any notice to staff and families must maintain confidentiality in accordance with [NCGS § 130A-143](#) and all other state and federal laws.



Positive Screening Protocols

Upon Arrival at School or Transportation Entry

WHO	Student: A designated individual (e.g., parent or guardian) is NOT PRESENT to immediately support child to get home or to medical care safely
CATEGORY	EXPOSURE, NO SYMPTOMS: Staff or Student shares they were exposed to someone with COVID-19 within the last 2 weeks but is NOT symptomatic

Exclusion

- ☐ Separate student in designated area with supervision by a delegated staff person until transportation is available
- ☐ School must notify designated parent/guardian/family member, or other individual to facilitate student getting home safely
- ☐ Student may not return to school until:
 - If no symptoms develop and they do not have a positive COVID-19 test, up to 14 days after last close contact with the positive individual.
 - If no symptoms develop but the person tests positive for COVID-19, 10 days after the date of the first positive test.
 - If symptoms develop and the person tests negative for COVID-19, up to 14 days after the last close contact with the positive individual.
 - If symptoms develop and the person tests positive for COVID-19, 10 days after the first positive test.
- ☐ Student should participate in remote learning while out.

Infection Control

- ☐ Ensure that face coverings are worn by all workers, teachers, guests, other adults and children age five (5) or older. In all public and nonpublic schools, all workers, teachers, guests, other adults and children five (5) years or older must wear face coverings when indoors, at all times, unless an exception applies, and when outdoors and within six (6) feet of another person, unless an exception applies.
- ☐ Individuals waiting to be screened must stand six feet apart from each other.
- ☐ The person taking temperatures must wear a cloth face covering and must stay six feet from the individual unless taking a temperature.

Transportation

- ☐ Person may not utilize group transportation such as the bus in order to leave the school facility

Reporting

- ☐ School is not required to report a positive screening for exposure to the Local Health Department.

Communication Between School and Local Health Department

- ☐ School may consult with the Local Health Department on next steps for management and considerations on cleaning following a positive screening for exposure.

Closure

- ☐ No closure is required.
- ☐ However, the school may consult with the Local Health Department on next steps.

Cleaning

- ☐ No additional cleaning is required beyond Plan A operational requirements.
- ☐ However, the school may consult with the Local Health Department on next steps.

Communication with Students, Families, and Staff

- ☐ School is not required to share the positive screening for exposure with students, families, and staff.
- ☐ However, the school may consult with the Local Health Department on next steps regarding considerations about communication following this particular instance of a positive screening for exposure.

Local Health Department Next Steps

- ☐ The Local Health Department may provide support to the school on next steps, if requested, for items such as management, considerations on cleaning, and communication following a positive screening for exposure.



Positive Screening Protocols

Upon Arrival at School or Transportation Entry

WHO	Student: A designated individual (e.g., parent or guardian) is NOT PRESENT to immediately support child to get home or to medical care safely
CATEGORY	DIAGNOSIS, NO SYMPTOMS: Staff or Student shares they were diagnosed with COVID-19 less than 10 days ago, but is NOT symptomatic

Exclusion

- ☐ Separate student in designated area with supervision by a delegated staff person until transportation is available.
- ☐ School must notify designated parent/guardian/family member, or other individual to facilitate student getting home safely.
- ☐ If they never develop symptoms before or after their positive test: person can return to school 10 days after the date of their first positive COVID-19 diagnostic test.
- ☐ Student should participate in remote learning while out.

Infection Control

- ☐ Ensure that face coverings are worn by all workers, teachers, guests, other adults and children age five (5) or older. In all public and nonpublic schools, all workers, teachers, guests, other adults and children five (5) years or older must wear face coverings when indoors, at all times, unless an exception applies, and when outdoors and within six (6) feet of another person, unless an exception applies.
- ☐ Individuals waiting to be screened must stand six feet apart from each other.
- ☐ The staff person taking temperatures must wear a cloth face covering, and must stay six feet from the individual unless taking a temperature.

Transportation

- ☐ Person may not utilize group transportation such as the bus in order to leave the school facility.

Reporting

- ☐ School must report a diagnosed case of COVID-19 among students or staff to the Local Health Department, as required by [NCGS § 130A-136](#).
- ☐ School must provide requested information, such as answering questions about adherence to mitigation efforts (e.g., wearing cloth face coverings with fidelity) and identifying potential close contacts based on classroom attendance.

Communication Between School and Local Health Department

- ☐ School must follow the directions from the Local Health Department for this particular instance, such as room or building closure, contacting students, staff, and families, and/or specific cleaning protocols.

Closure

- ☐ Close off areas used by the sick person and do not use these areas until after cleaning and disinfecting.
- ☐ Consult with the Local Health Department as to whether closure of a room or entire building is required. There may be no need to close the school if the Local Health Department determines that close contacts are excluded and there is sufficient space to continue normal operations.

Cleaning

- ❑ Close off areas used by the sick person, including school transportation vehicles, and do not use these areas until after cleaning and disinfecting.
- ❑ Wait at least 24 hours before cleaning and disinfecting. If 24 hours is not feasible, wait as long as possible.
- ❑ People should not be in the classroom, room, or other area of the facility while it is being cleaned.
- ❑ Open outside doors and windows to increase air circulation in the area.
- ❑ Use an [EPA-registered disinfectant](#) that is active against coronaviruses. Clean and disinfect frequently touched surfaces.
- ❑ Remember to clean items that might not ordinarily be cleaned daily such as doorknobs, light switches, countertops, chairs, cubbies, and playground structures.
- ❑ Follow [NCDHHS Environmental Health Section guidance](#) for additional cleaning and disinfection recommendations.
- ❑ For school transportation vehicles:
 - Do not use the vehicle until after cleaning and disinfection.
 - Wait at least 24 hours before cleaning and disinfecting (or if 24 hours is not feasible, wait as long as possible). Open vehicle windows to ventilate if possible.
 - Follow cleaning guidance in the Transportation section of the [StrongSchoolsNC Public Health Toolkit \(K-12\)](#).
- ❑ School must follow any other cleaning directions from the Local Health Department for this particular instance.

Communication with Students, Families, and Staff

- ❑ School may choose to notify staff and families that there was an individual at the school who was diagnosed with COVID-19.
- ❑ Any notice to staff and families must maintain confidentiality in accordance with [NCGS § 130A-143](#), FERPA, and all other state and federal laws.
- ❑ Local Health Department will contact staff and families if they are identified as a close contact of the individual who tested positive.

Local Health Department Next Steps

- ❑ The Local Health Department staff will interview the person with COVID-19. The parents or guardians of minor children may be included in the interview. As part of the interview, public health staff will work with the person/family, and the school, if appropriate, to identify individuals who were in close contact (defined as within 6 feet for 15 minutes or longer).
- ❑ Public health staff will reach out to close contacts and inform them that they need to quarantine at home for up to 14 days after their last contact with the person with COVID-19. If close contacts cannot socially distance from a case in the home, close contacts will need to quarantine for up to 14 days after the person who tested positive for COVID-19 is released from isolation. Click for more information on quarantining in [English](#) and in [Spanish](#).
- ❑ Public health staff will share that if a close contact's quarantine is discontinued before day 14 (i.e., discontinued at day 10 due to absence of symptoms, or discontinued at day 7 due to absence of symptoms and a negative PCR or molecular test), the individual must continue to adhere to all non-pharmaceutical interventions (e.g. wear a mask, practice social distancing) through 14 days after the last date of exposure.
- ❑ Public health staff will recommend the close contacts be tested to identify additional positive cases.
- ❑ Public health staff will share that a close contact who tests negative no earlier than day 5 of quarantine and is not presenting symptoms of COVID-19 may discontinue quarantine at day 7. However, the individual must continue to adhere to all non-pharmaceutical interventions (e.g. wear a mask, practice social distancing) through 14 days after the last date of exposure.



Positive Screening Protocols

Upon Arrival at School or Transportation Entry

WHO	Student: A designated individual (e.g., parent or guardian) is NOT PRESENT to immediately support child to get home or to medical care safely
CATEGORY	SYMPTOMS: Staff or Student presents with at least one of the following COVID-19 symptoms (<i>Fever • Chills • Shortness of breath or difficulty breathing • New cough • New loss of taste or smell</i>)

Exclusion

- ☐ Immediately isolate student in designated area with supervision by a delegated staff person.
- ☐ School must notify designated parent/guardian/family member, or other individual to facilitate student getting home and to medical care safely.
- ☐ Person must immediately go home and seek medical care.
- ☐ If diagnosed by a medical professional with COVID-19 based on a test (PCR/molecular or antigen) or symptoms, or does not get a COVID-19 test but has had symptoms, the person may return to school 10 days after their first day of symptoms and at least 24 hours with no fever without the use of fever-reducing medications, and other COVID-19 symptoms are improving.
- ☐ If the person receives a negative PCR/molecular COVID-19 test, person may return to school once there is no fever for 24 hours without the use of fever-reducing medicines and symptoms are improving.
- ☐ If the person receives a negative rapid antigen test, they may not return to school until they have a follow up PCR/molecular test. If the follow-up PCR/molecular test is negative, person may return to school once there is no fever for 24 hours without the use of fever-reducing medicines and symptoms are improving.
 - Any excluded household members may return to school when the symptomatic individual receives a negative PCR/molecular test, assuming no symptoms have developed.
- ☐ Student should participate in remote learning while out.
- ☐ The person can return to school, following normal school policies, if they receive confirmation of an alternate diagnosis from a health care provider that would explain the COVID-19-like symptom(s), once there is no fever for 24 hours without the use of fever-reducing medicines and symptoms are improving.
- ☐ All members of the symptomatic individual's household affiliated with the school (such as a sibling who is also a student, or a parent who is a teacher) must also follow procedures outlined above, because they are contacts to a potential COVID-19 case, based on the presence of symptoms consistent with COVID-19.
 - If the symptomatic individual receives confirmation of an alternate diagnosis from a health care provider that would explain the COVID-19-like symptom(s), household members may return to school at that time. The symptomatic individual may return once there is no fever without the use of fever-reducing medicines and they have felt well for 24 hours.

Infection Control

- ☐ Ensure that face coverings are worn by all workers, teachers, guests, other adults and children age five (5) or older. In all public and nonpublic schools, all workers, teachers, guests, other adults and children five (5) years or older must wear face coverings when indoors, at all times, unless an exception applies, and when outdoors and within six (6) feet of another person, unless an exception applies.

Transportation

- ☐ The person may not utilize group transportation such as the bus in order to leave the school facility.

Reporting

- ☐ School must report a suspected or confirmed COVID-19 case among students or staff to the Local Health Department, as required by [NCGS § 130A-136](#).
- ☐ School must provide requested information, such as answering questions about adherence to mitigation efforts (e.g., wearing cloth face coverings with fidelity) and identifying potential close contacts based on classroom attendance.

Communication Between School and Local Health Department

- ☐ If suspected or confirmed positive case is reported:
 - School must follow the directions shared by the Local Health Department for this particular instance, such as contacting students, staff, and families, and/or specific cleaning protocols, and possible room or building closure.

Closure

- ☐ Close off areas used by the sick person and do not use these areas until after cleaning and disinfecting.
- ☐ Consult with the Local Health Department as to whether closure of a classroom or entire building is required. There may be no need to close the school if the Local Health Department determines that close contacts are excluded and there is sufficient space to continue normal operations.

Cleaning

- ☐ Close off areas used by the sick person, including school transportation vehicles, and do not use these areas until after cleaning and disinfecting.
- ☐ Wait at least 24 hours before cleaning and disinfecting. If 24 hours is not feasible, wait as long as possible.
- ☐ People should not be in the classroom, room, or other area of the facility while it is being cleaned.
- ☐ Open outside doors and windows to increase air circulation in the area.
- ☐ Use an [EPA-registered disinfectant](#) that is active against coronaviruses. Clean and disinfect frequently touched surfaces.
- ☐ Remember to clean items that might not ordinarily be cleaned daily such as doorknobs, light switches, countertops, chairs, cubbies, and playground structures.
- ☐ Follow [NCDHHS Environmental Health Section guidance](#) for additional cleaning and disinfection recommendations.
- ☐ For school transportation vehicles:
 - Do not use the vehicle until after cleaning and disinfection.
 - Wait at least 24 hours before cleaning and disinfecting (or if 24 hours is not feasible, wait as long as possible).
 - Follow cleaning guidance in the Transportation section of the [StrongSchoolsNC Public Health Toolkit \(K-12\)](#).
- ☐ School must follow any other directions shared by the Local Health Department for this particular instance.

Communication with Students, Families, and Staff

- ☐ If a suspected or confirmed case is reported:
 - School may choose to notify staff and families that there was an individual at the school with a suspected or confirmed case for COVID-19.
 - Any notice to staff and families must maintain confidentiality in accordance with [NCGS § 130A-143](#) and all other state and federal laws.
 - Local Health Department will contact staff and families if they are identified as a close contact of the suspected or confirmed case.
- ☐ If there is no suspected or confirmed case of COVID-19:
 - School is not required to share the positive screening for symptoms with students, families, and staff.
 - However, the school may consult with the Local Health Department on next steps regarding the need for communication following this particular instance of a positive screening for symptoms.
 - Any notice to staff and families must maintain confidentiality in accordance with [NCGS § 130A-143](#) and all other state and federal laws.

Local Health Department Next Steps

- If a suspected or confirmed case reported:
 - The Local Health Department staff will interview the person with COVID-19. The parents or guardians of minor children may be included in the interview. As part of the interview, public health staff will work with the person/family, and the school, if appropriate, to identify individuals who were in close contact (defined as within 6 feet for 15 minutes or longer).
 - Public health staff will reach out to close contacts and inform them that they need to quarantine at home for up to 14 days after their last contact with the person with COVID-19. If close contacts cannot socially distance from a case in the home, close contacts will need to quarantine for up to 14 days after the person who tested positive for COVID-19 is released from isolation. Click for more information on quarantining in [English](#) and in [Spanish](#).
 - Public health staff will share that if a close contact's quarantine is discontinued before day 14 (i.e., discontinued at day 10 due to absence of symptoms, or discontinued at day 7 due to absence of symptoms and a negative PCR or molecular test), the individual must continue to adhere to all non-pharmaceutical interventions (e.g. wear a mask, practice social distancing) through 14 days after the last date of exposure.
 - Public health staff will recommend the close contacts be tested to identify additional positive cases.
 - Public health staff will share that a close contact who tests negative no earlier than day 5 of quarantine and is not presenting symptoms of COVID-19 may discontinue quarantine at day 7. However, the individual must continue to adhere to all non-pharmaceutical interventions (e.g. wear a mask, practice social distancing) through 14 days after the last date of exposure..
- If there is no suspected or confirmed case of COVID-19:
 - School is not required to share the positive screening for symptoms with students, families, and staff.
 - However, the school may consult with the Local Health Department on next steps regarding the need for communication following this particular instance of a positive screening for symptoms.
 - Any notice to staff and families must maintain confidentiality in accordance with [NCGS § 130A-143](#) and all other state and federal laws.



Positive Screening Protocols

During the School Day

WHO	Student
CATEGORY	EXPOSURE, NO SYMPTOMS: Staff or Student shares they were exposed to someone with COVID-19 within the last 2 weeks but is NOT symptomatic

Exclusion

- ☐ Separate student in designated area with supervision by a delegated staff person until transportation is available.
- ☐ School must notify designated parent/guardian/family member, or other individual to facilitate student getting home safely.
- ☐ Student may not return to school until:
 - If no symptoms develop and they do not have a positive COVID-19 test, up to 14 days after last close contact with the positive individual.
 - If no symptoms develop but the person tests positive for COVID-19, 10 days after the date of the first positive test.
 - If symptoms develop and the person tests negative for COVID-19, up to 14 days after the last close contact with the positive individual.
 - If symptoms develop and the person tests positive for COVID-19, 10 days after the first positive test.
- ☐ Student should participate in remote learning while out.

Infection Control

- ☐ Ensure that face coverings are worn by all workers, teachers, guests, other adults and children age five (5) or older. In all public and nonpublic schools, all workers, teachers, guests, other adults and children five (5) years or older must wear face coverings when indoors, at all times, unless an exception applies, and when outdoors and within six (6) feet of another person, unless an exception applies.
- ☐ Individuals waiting to be screened must stand six feet apart from each other.
- ☐ The person taking temperatures must wear a cloth face covering and must stay six feet from the individual unless taking a temperature.

Transportation

- ☐ Person may not utilize group transportation such as the bus in order to leave the school facility.

Reporting

- ☐ School is not required to report a positive screening for exposure to the Local Health Department.

Communication Between School and Local Health Department

- ☐ School may consult with the Local Health Department on next steps for management and considerations on cleaning following a positive screening for exposure.

Closure

- ☐ No closure is required.
- ☐ However, the school may consult with the Local Health Department on next steps.

Cleaning

- ☐ No additional cleaning is required beyond Plan A operational requirements.
- ☐ However, the school may consult with the Local Health Department on next steps.

Communication with Students, Families, and Staff

- School is not required to share the positive screening for exposure with students, families, and staff.
- However, the school may consult with the Local Health Department on next steps regarding considerations about communication following this particular instance of a positive screening for exposure.

Local Health Department Next Steps

- The Local Health Department may provide support to the school on next steps, if requested, for items such as management, considerations on cleaning, and communication following a positive screening for exposure.



Positive Screening Protocols

During the School Day

WHO	Student
CATEGORY	DIAGNOSIS, NO SYMPTOMS: Staff or Student shares they were diagnosed with COVID-19 less than 10 days ago, but is NOT symptomatic

Exclusion

- ☐ Separate student in designated area with supervision by a delegated staff person until transportation is available.
- ☐ School must notify designated parent/guardian/family member, or other individual to facilitate student getting home safely.
- ☐ If they never develop symptoms before or after their positive test: person can return to school 10 days after the date of their first positive COVID-19 diagnostic test.
- ☐ Student should participate in remote learning while out.

Infection Control

- ☐ Ensure that face coverings are worn by all workers, teachers, guests, other adults and children age five (5) or older. In all public and nonpublic schools, all workers, teachers, guests, other adults and children five (5) years or older must wear face coverings when indoors, at all times, unless an exception applies, and when outdoors and within six (6) feet of another person, unless an exception applies.
- ☐ Individuals waiting to be screened must stand six feet apart from each other.
- ☐ The staff person taking temperatures must wear a cloth face covering, and must stay six feet from the individual unless taking a temperature.

Transportation

- ☐ Person may not utilize group transportation such as the bus in order to leave the school facility.

Reporting

- ☐ School must report a diagnosed case of COVID-19 among students or staff to the Local Health Department, as required by [NCGS § 130A-136](#).
- ☐ School must provide requested information, such as answering questions about adherence to mitigation efforts (e.g., wearing cloth face coverings with fidelity) and identifying potential close contacts based on classroom attendance.

Communication Between School and Local Health Department

- ☐ School must follow the directions from the Local Health Department for this particular instance, such as room or building closure, contacting students, staff, and families, and/or specific cleaning protocols.

Closure

- ☐ Close off areas used by the sick person and do not use these areas until after cleaning and disinfecting.
- ☐ Consult with the Local Health Department as to whether closure of a room or entire building is required. There may be no need to close the school if the Local Health Department determines that close contacts are excluded and there is sufficient space to continue normal operations.

Cleaning

- ❑ Close off areas used by the sick person, including school transportation vehicles, and do not use these areas until after cleaning and disinfecting.
- ❑ Wait at least 24 hours before cleaning and disinfecting. If 24 hours is not feasible, wait as long as possible.
- ❑ People should not be in the classroom, room, or other area of the facility while it is being cleaned.
- ❑ Open outside doors and windows to increase air circulation in the area.
- ❑ Use an [EPA-registered disinfectant](#) that is active against coronaviruses. Clean and disinfect frequently touched surfaces.
- ❑ Remember to clean items that might not ordinarily be cleaned daily such as doorknobs, light switches, countertops, chairs, cubbies, and playground structures.
- ❑ Follow [NCDHHS Environmental Health Section guidance](#) for additional cleaning and disinfection recommendations.
- ❑ For school transportation vehicles:
 - Do not use the vehicle until after cleaning and disinfection.
 - Wait at least 24 hours before cleaning and disinfecting (or if 24 hours is not feasible, wait as long as possible). Open vehicle windows to ventilate if possible.
 - Follow cleaning guidance in the Transportation section of the [StrongSchoolsNC Public Health Toolkit \(K-12\)](#).
- ❑ School must follow any other cleaning directions from the Local Health Department for this particular instance.

Communication with Students, Families, and Staff

- ❑ School may choose to notify staff and families that there was an individual at the school who was diagnosed with COVID-19.
- ❑ Any notice to staff and families must maintain confidentiality in accordance with [NCGS § 130A-143](#), FERPA, and all other state and federal laws.
- ❑ Local Health Department will contact staff and families if they are identified as a close contact of the individual who tested positive.

Local Health Department Next Steps

- ❑ The Local Health Department staff will interview the person with COVID-19. The parents or guardians of minor children may be included in the interview. As part of the interview, public health staff will work with the person/family, and the school, if appropriate, to identify individuals who were in close contact (defined as within 6 feet for 15 minutes or longer).
- ❑ Public health staff will reach out to close contacts and inform them that they need to quarantine at home for up to 14 days after their last contact with the person with COVID-19. If close contacts cannot socially distance from a case in the home, close contacts will need to quarantine for up to 14 days after the person who tested positive for COVID-19 is released from isolation. Click for more information on quarantining in [English](#) and in [Spanish](#).
- ❑ Public health staff will share that if a close contact's quarantine is discontinued before day 14 (i.e., discontinued at day 10 due to absence of symptoms, or discontinued at day 7 due to absence of symptoms and a negative PCR or molecular test), the individual must continue to adhere to all non-pharmaceutical interventions (e.g. wear a mask, practice social distancing) through 14 days after the last date of exposure.
- ❑ Public health staff will recommend the close contacts be tested to identify additional positive cases.
- ❑ Public health staff will share that a close contact who tests negative no earlier than day 5 of quarantine and is not presenting symptoms of COVID-19 may discontinue quarantine at day 7. However, the individual must continue to adhere to all non-pharmaceutical interventions (e.g. wear a mask, practice social distancing) through 14 days after the last date of exposure.



Positive Screening Protocols During the School Day

WHO	Student
CATEGORY	SYMPTOMS: Staff or Student presents with at least one of the following COVID-19 symptoms (<i>Fever • Chills • Shortness of breath or difficulty breathing • New cough • New loss of taste or smell</i>)

Exclusion

- ☐ Immediately isolate student in designated area with supervision by a delegated staff person.
- ☐ School must notify designated parent/guardian/family member, or other individual to facilitate student getting home and to medical care safely.
- ☐ Person must immediately go home and seek medical care
- ☐ If diagnosed by a medical professional with COVID-19 based on a test (PCR/molecular or antigen) or symptoms, or does not get a COVID-19 test but has had symptoms, the person may return to school 10 days after their first day of symptoms and at least 24 hours with no fever without the use of fever-reducing medications, and other COVID-19 symptoms are improving.
- ☐ If the person receives a negative PCR/molecular COVID-19 test, person may return to school once there is no fever for 24 hours without the use of fever-reducing medicines and symptoms are improving.
- ☐ If the person receives a negative rapid antigen test, they may not return to school until they have a follow up PCR/molecular test. If the follow-up PCR/molecular test is negative, person may return to school once there is no fever for 24 hours without the use of fever-reducing medicines and symptoms are improving.
 - Any excluded household members may return to school when the symptomatic individual receives a negative PCR/molecular test, assuming no symptoms have developed.
- ☐ Student should participate in remote learning while out.
- ☐ The person can return to school, following normal school policies, if they receive confirmation of an alternate diagnosis from a health care provider that would explain the COVID-19-like symptom(s), once there is no fever for 24 hours without the use of fever-reducing medicines and symptoms are improving.
- ☐ All members of the symptomatic individual's household affiliated with the school (such as a sibling who is also a student, or a parent who is a teacher) must also follow procedures outlined above, because they are contacts to a potential COVID-19 case, based on the presence of symptoms consistent with COVID-19.
 - If the symptomatic individual receives confirmation of an alternate diagnosis from a health care provider that would explain the COVID-19-like symptom(s), household members may return to school at that time. The symptomatic individual may return once there is no fever without the use of fever-reducing medicines and they have felt well for 24 hours.

Infection Control

- ☐ Ensure that face coverings are worn by all workers, teachers, guests, other adults and children age five (5) or older. In all public and nonpublic schools, all workers, teachers, guests, other adults and children five (5) years or older must wear face coverings when indoors, at all times, unless an exception applies, and when outdoors and within six (6) feet of another person, unless an exception applies.

Transportation

- ☐ The person may not utilize group transportation such as the bus in order to leave the school facility.

Reporting

- ☐ School must report a suspected or confirmed COVID-19 case among students or staff to the Local Health Department, as required by [NCGS § 130A-136](#).
- ☐ School must provide requested information, such as answering questions about adherence to mitigation efforts (e.g., wearing cloth face coverings with fidelity) and identifying potential close contacts based on classroom attendance.

Communication Between School and Local Health Department

- ☐ If suspected or confirmed positive case is reported:
 - School must follow the directions shared by the Local Health Department for this particular instance, such as contacting students, staff, and families, and/or specific cleaning protocols, and possible room or building closure.

Closure

- ☐ Close off areas used by the sick person and do not use these areas until after cleaning and disinfecting.
- ☐ Consult with the Local Health Department as to whether closure of a classroom or entire building is required. There may be no need to close the school if the Local Health Department determines that close contacts are excluded and there is sufficient space to continue normal operations.

Cleaning

- ☐ Close off areas used by the sick person, including school transportation vehicles, and do not use these areas until after cleaning and disinfecting.
- ☐ Wait at least 24 hours before cleaning and disinfecting. If 24 hours is not feasible, wait as long as possible.
- ☐ People should not be in the classroom, room, or other area of the facility while it is being cleaned.
- ☐ Open outside doors and windows to increase air circulation in the area.
- ☐ Use an [EPA-registered disinfectant](#) that is active against coronaviruses. Clean and disinfect frequently touched surfaces.
- ☐ Remember to clean items that might not ordinarily be cleaned daily such as doorknobs, light switches, countertops, chairs, cubbies, and playground structures.
- ☐ Follow [NCDHHS Environmental Health Section guidance](#) for additional cleaning and disinfection recommendations.
- ☐ For school transportation vehicles:
 - Do not use the vehicle until after cleaning and disinfection.
 - Wait at least 24 hours before cleaning and disinfecting (or if 24 hours is not feasible, wait as long as possible).
 - Follow cleaning guidance in the Transportation section of the [StrongSchoolsNC Public Health Toolkit \(K-12\)](#).
- ☐ School must follow any other directions shared by the Local Health Department for this particular instance.

Communication with Students, Families, and Staff

- ☐ If a suspected or confirmed case is reported:
 - School may choose to notify staff and families that there was an individual at the school with a suspected or confirmed case for COVID-19.
 - Any notice to staff and families must maintain confidentiality in accordance with [NCGS § 130A-143](#) and all other state and federal laws.
 - Local Health Department will contact staff and families if they are identified as a close contact of the suspected or confirmed case.
- ☐ If there is no suspected or confirmed case of COVID-19:
 - School is not required to share the positive screening for symptoms with students, families, and staff.
 - However, the school may consult with the Local Health Department on next steps regarding the need for communication following this particular instance of a positive screening for symptoms.
 - Any notice to staff and families must maintain confidentiality in accordance with [NCGS § 130A-143](#) and all other state and federal laws.

Local Health Department Next Steps

- If a suspected or confirmed case reported:
 - The Local Health Department staff will interview the person with COVID-19. The parents or guardians of minor children may be included in the interview. As part of the interview, public health staff will work with the person/family, and the school, if appropriate, to identify individuals who were in close contact (defined as within 6 feet for 15 minutes or longer).
 - Public health staff will reach out to close contacts and inform them that they need to quarantine at home for up to 14 days after their last contact with the person with COVID-19. If close contacts cannot socially distance from a case in the home, close contacts will need to quarantine for up to 14 days after the person who tested positive for COVID-19 is released from isolation. Click for more information on quarantining in [English](#) and in [Spanish](#).
 - Public health staff will share that if a close contact's quarantine is discontinued before day 14 (i.e., discontinued at day 10 due to absence of symptoms, or discontinued at day 7 due to absence of symptoms and a negative PCR or molecular test), the individual must continue to adhere to all non-pharmaceutical interventions (e.g. wear a mask, practice social distancing) through 14 days after the last date of exposure.
 - Public health staff will recommend the close contacts be tested to identify additional positive cases.
 - Public health staff will share that a close contact who tests negative no earlier than day 5 of quarantine and is not presenting symptoms of COVID-19 may discontinue quarantine at day 7. However, the individual must continue to adhere to all non-pharmaceutical interventions (e.g. wear a mask, practice social distancing) through 14 days after the last date of exposure.
- If there is no suspected or confirmed case of COVID-19:
 - School is not required to share the positive screening for symptoms with students, families, and staff.
 - However, the school may consult with the Local Health Department on next steps regarding the need for communication following this particular instance of a positive screening for symptoms.
 - Any notice to staff and families must maintain confidentiality in accordance with [NCGS § 130A-143](#) and all other state and federal laws.



Positive Screening Protocols

During the School Day

WHO	Staff Member
CATEGORY	EXPOSURE, NO SYMPTOMS: Staff or Student shares they were exposed to someone with COVID-19 within the last 2 weeks but is NOT symptomatic

Exclusion

- ☐ Supervisor must be notified immediately.
- ☐ Person must immediately go home.
- ☐ Person may not return to school until:
 - If no symptoms develop and they do not have a positive COVID-19 test, up to 14 days after last close contact with the positive individual.
 - If no symptoms develop but the person tests positive for COVID-19, 10 days after the date of the first positive test.
 - If symptoms develop and the person tests negative for COVID-19, up to 14 days after the last close contact with the positive individual.
 - If symptoms develop and the person tests positive for COVID-19, 10 days after the first positive test.
- ☐ Person may participate in remote teaching (if applicable) while out.

Infection Control

- ☐ Ensure that face coverings are worn by all workers, teachers, guests, other adults and children age five (5) or older. In all public and nonpublic schools, all workers, teachers, guests, other adults and children five (5) years or older must wear face coverings when indoors, at all times, unless an exception applies, and when outdoors and within six (6) feet of another person, unless an exception applies.

Transportation

- ☐ Person may not utilize group transportation such as the bus in order to leave the school facility.

Reporting

- ☐ School is not required to report a positive screening for exposure to the Local Health Department.

Communication Between School and Local Health Department

- ☐ School may consult with the Local Health Department on next steps for management and considerations on cleaning following a positive screening for exposure.

Closure

- ☐ No closure is required.
- ☐ However, the school may consult with the Local Health Department on next steps.

Cleaning

- ☐ No additional cleaning is required beyond Plan A operational requirements.
- ☐ However, the school may consult with the Local Health Department on next steps.

Communication with Students, Families, and Staff

- ☐ School is not required to share the positive screening for exposure with students, families, and staff.
- ☐ However, the school may consult with the Local Health Department on next steps regarding considerations about communication following this particular instance of a positive screening for exposure.

Local Health Department Next Steps

- ☐ The Local Health Department may provide support to the school on next steps, if requested, for items such as management, considerations on cleaning, and communication following a positive screening for exposure.



Positive Screening Protocols

During the School Day

WHO	Staff Member
CATEGORY	DIAGNOSIS, NO SYMPTOMS: Staff or Student shares they were diagnosed with COVID-19 less than 10 days ago, but is NOT symptomatic

Exclusion

- ☐ Supervisor must be notified immediately.
- ☐ Person must immediately go home.
- ☐ If they never develop symptoms before or after their positive test: person can return to school 10 days after the date of their first positive COVID-19 diagnostic test.
- ☐ Person may participate in remote teaching (if applicable) while out.

Infection Control

- ☐ Ensure that face coverings are worn by all workers, teachers, guests, other adults and children age five (5) or older. In all public and nonpublic schools, all workers, teachers, guests, other adults and children five (5) years or older must wear face coverings when indoors, at all times, unless an exception applies, and when outdoors and within six (6) feet of another person, unless an exception applies.

Transportation

- ☐ Person may not utilize group transportation such as the bus in order to leave the school facility.

Reporting

- ☐ School must report a diagnosed case of COVID-19 among students or staff to the Local Health Department, as required by [NCGS § 130A-136](#).
- ☐ School must provide requested information, such as answering questions about adherence to mitigation efforts (e.g., wearing cloth face coverings with fidelity) and identifying potential close contacts based on classroom attendance.

Communication Between School and Local Health Department

- ☐ School must follow the directions from the Local Health Department for this particular instance, such as room or building closure, contacting students, staff, and families, and/or specific cleaning protocols.

Closure

- ☐ Close off areas used by the sick person and do not use these areas until after cleaning and disinfecting.
- ☐ Consult with the Local Health Department as to whether closure of a room or entire building is required. There may be no need to close the school if the Local Health Department determines that close contacts are excluded and there is sufficient space to continue normal operations.

Cleaning

- ☐ Close off areas used by the sick person, including school transportation vehicles, and do not use these areas until after cleaning and disinfecting.
- ☐ Wait at least 24 hours before cleaning and disinfecting. If 24 hours is not feasible, wait as long as possible.
- ☐ People should not be in the classroom, room, or other area of the facility while it is being cleaned.
- ☐ Open outside doors and windows to increase air circulation in the area.
- ☐ Use an [EPA-registered disinfectant](#) that is active against coronaviruses. Clean and disinfect frequently touched surfaces.
- ☐ Remember to clean items that might not ordinarily be cleaned daily such as doorknobs, light switches, countertops, chairs, cubbies, and playground structures.

- ❑ Follow [NCDHHS Environmental Health Section guidance](#) for additional cleaning and disinfection recommendations.
- ❑ For school transportation vehicles:
 - Do not use the vehicle until after cleaning and disinfection.
 - Wait at least 24 hours before cleaning and disinfecting (or if 24 hours is not feasible, wait as long as possible). Open vehicle windows to ventilate if possible.
 - Follow cleaning guidance in the Transportation section of the [StrongSchoolsNC Public Health Toolkit \(K-12\)](#).
- ❑ School must follow any other cleaning directions from the Local Health Department for this particular instance.

Communication with Students, Families, and Staff

- ❑ School may choose to notify staff and families that there was an individual at the school who was diagnosed with COVID-19.
- ❑ Any notice to staff and families must maintain confidentiality in accordance with [NCGS § 130A-143](#), FERPA, and all other state and federal laws.
- ❑ Local Health Department will contact staff and families if they are identified as a close contact of the individual who tested positive.

Local Health Department Next Steps

- ❑ The Local Health Department staff will interview the staff person with COVID-19. As part of the interview, public health staff will work with the person/family, and the school, if appropriate, to identify individuals who were in close contact (defined as within 6 feet for 15 minutes or longer).
- ❑ Public health staff will reach out to close contacts and inform them that they need to quarantine at home for up to 14 days after their last contact with the person with COVID-19. If close contacts cannot socially distance from a case in the home, close contacts will need to quarantine for up to 14 days after the person who tested positive for COVID-19 is released from isolation. Click for more information on quarantining in [English](#) and in [Spanish](#).
- ❑ Public health staff will share that if a close contact's quarantine is discontinued before day 14 (i.e., discontinued at day 10 due to absence of symptoms, or discontinued at day 7 due to absence of symptoms and a negative PCR or molecular test), the individual must continue to adhere to all non-pharmaceutical interventions (e.g. wear a mask, practice social distancing) through 14 days after the last date of exposure.
- ❑ Public health staff will recommend the close contacts be tested to identify additional positive cases.
- ❑ Public health staff will share that a close contact who tests negative no earlier than day 5 of quarantine and is not presenting symptoms of COVID-19 may discontinue quarantine at day 7. However, the individual must continue to adhere to all non-pharmaceutical interventions (e.g. wear a mask, practice social distancing) through 14 days after the last date of exposure.



Positive Screening Protocols During the School Day

WHO	Staff Member
CATEGORY	SYMPTOMS: Staff or Student presents with at least one of the following COVID-19 symptoms (<i>Fever • Chills • Shortness of breath or difficulty breathing • New cough • New loss of taste or smell</i>)

Exclusion

- ☐ Supervisor must be notified immediately.
- ☐ Person must immediately go home.
- ☐ If diagnosed by a medical professional with COVID-19 based on a test (PCR/molecular or antigen) or symptoms, or does not get a COVID-19 test but has had symptoms, the person may return to school 10 days after their first day of symptoms and at least 24 hours with no fever without the use of fever-reducing medications, and other COVID-19 symptoms are improving.
- ☐ If the person receives a negative PCR/molecular COVID-19 test, person may return to school once there is no fever for 24 hours without the use of fever-reducing medicines and symptoms are improving.
- ☐ If the person receives a negative rapid antigen test, they may not return to school until they have a follow up PCR/molecular test. If the follow-up PCR/molecular test is negative, person may return to school once there is no fever for 24 hours without the use of fever-reducing medicines and symptoms are improving.
 - Any excluded household members may return to school when the symptomatic individual receives a negative PCR/molecular test, assuming no symptoms have developed.
- ☐ Person may participate in remote teaching (if applicable) while out.
- ☐ The person can return to school, following normal school policies, if they receive confirmation of an alternate diagnosis from a health care provider that would explain the COVID-19-like symptom(s), once there is no fever for 24 hours without the use of fever-reducing medicines and symptoms are improving.
- ☐ All members of the symptomatic individual's household affiliated with the school (such as a sibling who is also a student, or a parent who is a teacher) must also follow procedures outlined above, because they are contacts to a potential COVID-19 case, based on the presence of symptoms consistent with COVID-19.
 - If the symptomatic individual receives confirmation of an alternate diagnosis from a health care provider that would explain the COVID-19-like symptom(s), household members may return to school at that time. The symptomatic individual may return once there is no fever without the use of fever-reducing medicines and they have felt well for 24 hours.

Infection Control

- ☐ Ensure that face coverings are worn by all workers, teachers, guests, other adults and children age five (5) or older. In all public and nonpublic schools, all workers, teachers, guests, other adults and children five (5) years or older must wear face coverings when indoors, at all times, unless an exception applies, and when outdoors and within six (6) feet of another person, unless an exception applies.

Transportation

- ☐ The person may not utilize group transportation such as the bus in order to leave the school facility.

Reporting

- ☐ School must report a suspected or confirmed COVID-19 case among students or staff to the Local Health Department, as required by [NCGS § 130A-136](#).
- ☐ School must provide requested information, such as answering questions about adherence to mitigation efforts (e.g., wearing cloth face coverings with fidelity) and identifying potential close contacts based on classroom attendance.

Communication Between School and Local Health Department

- ☐ If suspected or confirmed positive case is reported:
 - School must follow the directions shared by the Local Health Department for this particular instance, such as contacting students, staff, and families, and/or specific cleaning protocols, and possible room or building closure.

Closure

- ☐ Close off areas used by the sick person and do not use these areas until after cleaning and disinfecting.
- ☐ Consult with the Local Health Department as to whether closure of a classroom or entire building is required. There may be no need to close the school if the Local Health Department determines that close contacts are excluded and there is sufficient space to continue normal operations.

Cleaning

- ☐ Close off areas used by the sick person, including school transportation vehicles, and do not use these areas until after cleaning and disinfecting.
- ☐ Wait at least 24 hours before cleaning and disinfecting. If 24 hours is not feasible, wait as long as possible.
- ☐ People should not be in the classroom, room, or other area of the facility while it is being cleaned.
- ☐ Open outside doors and windows to increase air circulation in the area.
- ☐ Use an [EPA-registered disinfectant](#) that is active against coronaviruses. Clean and disinfect frequently touched surfaces.
- ☐ Remember to clean items that might not ordinarily be cleaned daily such as doorknobs, light switches, countertops, chairs, cubbies, and playground structures.
- ☐ Follow [NCDHHS Environmental Health Section guidance](#) for additional cleaning and disinfection recommendations.
- ☐ For school transportation vehicles:
 - Do not use the vehicle until after cleaning and disinfection.
 - Wait at least 24 hours before cleaning and disinfecting (or if 24 hours is not feasible, wait as long as possible).
 - Follow cleaning guidance in the Transportation section of the [StrongSchoolsNC Public Health Toolkit \(K-12\)](#).
- ☐ School must follow any other directions shared by the Local Health Department for this particular instance.

Communication with Students, Families, and Staff

- ☐ If a suspected or confirmed case is reported:
 - School may choose to notify staff and families that there was an individual at the school with a suspected or confirmed case for COVID-19.
 - Any notice to staff and families must maintain confidentiality in accordance with [NCGS § 130A-143](#) and all other state and federal laws.
 - Local Health Department will contact staff and families if they are identified as a close contact of the suspected or confirmed case.
- ☐ If there is no suspected or confirmed case of COVID-19:
 - School is not required to share the positive screening for symptoms with students, families, and staff.
 - However, the school may consult with the Local Health Department on next steps regarding the need for communication following this particular instance of a positive screening for symptoms.
 - Any notice to staff and families must maintain confidentiality in accordance with [NCGS § 130A-143](#) and all other state and federal laws.

Local Health Department Next Steps

- ☐ If a suspected or confirmed case reported:
 - The Local Health Department staff will interview the person with COVID-19. The parents or guardians of minor children may be included in the interview. As part of the interview, public health staff will work with the person/family, and the school, if appropriate, to identify individuals who were in close contact (defined as within 6 feet for 15 minutes or longer).

- Public health staff will reach out to close contacts and inform them that they need to quarantine at home for up to 14 days after their last contact with the person with COVID-19. If close contacts cannot socially distance from a case in the home, close contacts will need to quarantine for up to 14 days after the person who tested positive for COVID-19 is released from isolation. Click for more information on quarantining in [English](#) and in [Spanish](#).
 - Public health staff will share that if a close contact's quarantine is discontinued before day 14 (i.e., discontinued at day 10 due to absence of symptoms, or discontinued at day 7 due to absence of symptoms and a negative PCR or molecular test), the individual must continue to adhere to all non-pharmaceutical interventions (e.g. wear a mask, practice social distancing) through 14 days after the last date of exposure.
 - Public health staff will recommend the close contacts be tested to identify additional positive cases.
 - Public health staff will share that a close contact who tests negative no earlier than day 5 of quarantine and is not presenting symptoms of COVID-19 may discontinue quarantine at day 7. However, the individual must continue to adhere to all non-pharmaceutical interventions (e.g. wear a mask, practice social distancing) through 14 days after the last date of exposure.
- If there is no suspected or confirmed case of COVID-19:
- School is not required to share the positive screening for symptoms with students, families, and staff.
 - However, the school may consult with the Local Health Department on next steps regarding the need for communication following this particular instance of a positive screening for symptoms.
 - Any notice to staff and families must maintain confidentiality in accordance with [NCGS § 130A-143](#) and all other state and federal laws.